

Welcome to Nymet



Our Business originated in Australia during the 1960's manufacturing OEM valves for domestic appliances such as washing machines and dishwashers.

Over the years the range has expanded to include valves for many industries and applications. Acquired by Nymet in the year 2000, we continue the tradition of quality manufacturing as a specialist niche market manufacturer.

In 2008 we proudly opened an additional manufacturing facility in Singapore. This facility has an annual production capacity of one million valves.

With our in-house design engineering team from Europe, Australia and Asia, Nymet can design, prototype and manufacture customised valves with significantly reduced lead-times.

So whether you require a standard valve from our existing range, or a fully customised OEM valve, Nymet is your quality partner. Through our global network of offices, representatives and distribution partners, local representation is never far away, and distribution opportunities still exist in some countries.

We are pleased to submit our Short Form Catalogue to you. Detailed technical information on each Series of valves is available in separate publications.



**World Leader in
Design and Production of
Customised OEM Valves**



General Index



1 > Series A 3/4" BSP Inlet (Male) - 3/4" BSP Outlet (Male)



2 > Series B 3/4" BSP Inlet (Male) - 3/4" Barb Outlet



3 > Series C 3/4" BSP Inlet (Male) - 1/2" Barb Outlet



4 > Series D 3/4" BSP Inlet (Male) - 10.5mm Barb Outlet



5 > Series E 3/4" BSP Inlet (Male) - 10.5mm Barb Outlet Inline



6 > Series F 3/4" BSP Inlet (Male) - 10.5mm Barb Outlet Right Angle



7 > Series G 3/4" BSP Inlet (Male) - 1/2" Barb Outlet Right Angle



8 > Series H 1/2" BSP Inlet (Male) - 1/2" BSP Outlet (Female)



9 > Series J 3/4" BSP Inlet (Male) - 16mm Barb Outlet



10 > Series K 2 x 5/8" Barb Inlet - 1 x 3/4" Barb Outlet



11 > Series L 3/8" BSP Inlet (Female) - 3/8" BSP Outlet (Female)

General Index



12 > Series M 3/8" BSP Inlet (Male) - 5/8" Barb Outlet



13 > Series N 1" BSP Inlet (Female) - 1" BSP Outlet (Female)



14 > Series P 1/2" BSP Inlet (Male) - 2 x 1/2" BSP Outlet (Male)



15 > Series Q 1/2" BSP Inlet (Male) - 1/2" BSP Outlet (Female)
(Direct Acting)



16 > Series R 3/4" BSP Inlet (Male) - 3/4" BSP Outlet (Male) High Flow



17 > Series S 3/4" BSP Inlet (Male) - 3/4" Barb Outlet High Flow



18 > Series T 1/2" BSP Inlet (Female) - 1/2" BSP Outlet (Male)



19 > Series U 1/2" BSP Inlet (Female) - 1/2" Barb Outlet



20 > Series V 1" BSP Inlet (Manifold) - 1" BSP Outlet (Female)



21 > Series Y 3/4" BSP Inlet (Male) - 3/4" BSP Outlet (Male) High Flow Manifold



22 > Series Z 3/4" BSP Inlet (Male) - 3/4" Barb Outlet High Flow Manifold

Solenoid Valves SERIES A

3/4" BSP Inlet (Male) - 3/4" BSP Outlet (Male)



Pressure Range

- 20kPa (3psi) - 1250kPa (180psi)

Temperature Range

- 2°C - 60°C (ambient)
- 2°C - 80°C (media)

Nominal Flow Rate

- 20LPM

Media Types

- Air, Water, Light Oil

CODING EXAMPLE

AB - 2A1B - T000 - CUS - NS

A » SERIES

B » BODY COLOUR
B = Black
W = White

2 » COIL VOLTAGE
0 = 6 to 12V
1 = 12V
2 = 24V
3 = 48V
4 = 100 to 120V (50/60Hz)
5 = 220 to 240V (50/60Hz)

A » ALTERNATING OR DIRECT CURRENT
A = AC
D = DC
P = Pulse

1 » COIL ORIENTATION (Reference point of 0 degrees is inline with the inlet. Orientation sequence is clockwise)
0 = 0 Degrees
1 = 90 Degrees
2 = 180 Degrees
3 = 270 Degrees

B » COIL COLOUR
B = Black
W = White

T » ELECTRICAL CONNECTION TYPE
T = 6.3mm QC tab (not leaded)
D = DIN connector
L = Wire Leads

0 » WIRE LEAD LENGTH (Applies to Electrical Connection Type L only)
0 = Not Applicable
1 = 100mm
2 = 180mm
3 = 300mm
4 = 350mm
5 = 800mm
6 = 1850mm
7 = 500mm

0 » WIRE LEAD COLOUR (Applies to Electrical Connection Type L only)
0 = Not Applicable
1 = Black
2 = Blue
3 = Brown
4 = Red
5 = Yellow
6 = White
8 = Black/Red
9 = 2 Core Black Sheath (Black/Red)

0 » WIRE LEAD TREATMENT (Applies to Electrical Connection Type L only)
0 = Not Applicable
1 = Cut not stripped
2 = Stripped 6mm
3 = Stripped 10mm
9 = 4.8mm QC Receptical (Insulated)

C » VALVE OPERATING TYPE
O = Normally Open
C = Normally Closed
L = Latching
P = Proportional

U » REGULATOR
A = 3 litres/minute
B = 4 litres/minute
C = 8 litres/minute
D = 12 litres/minute
E = 16 litres/minute
U = Unregulated

S » ELASTOMER PROPERTIES
S = Standard (for use with water & air only)
V = Chemical Resistant (Internal Viton components)

N » INSERT MARKINGS
N = Nymet Standard Insert
X = Customer Specified Insert

S » PACKAGING
S = Standard Export Packaging
X = Customer Specified Packaging

Solenoid Valves SERIES B

3/4" BSP Inlet (Male) - 3/4" Barb Outlet



Pressure Range

- 20kPa (3psi) - 1250kPa (180psi)

Temperature Range

- 2°C - 60°C (ambient)
- 2°C - 80°C (media)

Nominal Flow Rate

- 20LPM

Media Types

- Air, Water, Light Oil

CODING EXAMPLE

BB - 1D3B - L499 - CDV - XS

B » SERIES

B » BODY COLOUR
B = Black
W = White

1 » COIL VOLTAGE
 0 = 6 to 12V
1 = 12V
 2 = 24V
 3 = 48V
 4 = 100 to 120V (50/60Hz)
 5 = 220 to 240V (50/60Hz)

D » ALTERNATING OR DIRECT CURRENT
A = AC
D = DC
P = Pulse

3 » COIL ORIENTATION (Reference point of 0 degrees is inline with the inlet. Orientation sequence is clockwise)
 0 = 0 Degrees
1 = 90 Degrees
 2 = 180 Degrees
3 = 270 Degrees

B » COIL COLOUR
B = Black
W = White

L » ELECTRICAL CONNECTION TYPE
T = 6.3mm QC tab (not leaded)
D = DIN connector
L = Wire Leads

4 » WIRE LEAD LENGTH (Applies to Electrical Connection Type L only)
 0 = Not Applicable
1 = 100mm
 2 = 180mm
 3 = 300mm
4 = 350mm
 5 = 800mm
 6 = 1850mm
 7 = 500mm

9 » WIRE LEAD COLOUR (Applies to Electrical Connection Type L only)
 0 = Not Applicable
1 = Black
 2 = Blue
 3 = Brown
4 = Red
 5 = Yellow
 6 = White
 8 = Black/Red
9 = 2 Core Black Sheath (Black/Red)

9 » WIRE LEAD TREATMENT (Applies to Electrical Connection Type L only)
 0 = Not Applicable
1 = Cut not stripped
 2 = Stripped 6mm
 3 = Stripped 10mm
9 = 4.8mm QC Receptical (Insulated)

C » VALVE OPERATING TYPE
O = Normally Open
C = Normally Closed
L = Latching
P = Proportional

D » REGULATOR
A = 3 litres/minute
B = 4 litres/minute
C = 8 litres/minute
D = 12 litres/minute
E = 16 litres/minute
U = Unregulated

V » ELASTOMER PROPERTIES
S = Standard (for use with water & air only)
V = Chemical Resistant (Internal Viton components)

X » INSERT MARKINGS
N = Nymet Standard Insert
X = Customer Specified Insert

S » PACKAGING
S = Standard Export Packaging
X = Customer Specified Packaging

Solenoid Valves SERIES C

3/4" BSP Inlet (Male) - 1/2" Barb Outlet



Pressure Range

- 20kPa (3psi) - 1250kPa (180psi)

Temperature Range

- 2°C - 60°C (ambient)
- 2°C - 80°C (media)

Nominal Flow Rate

- 20LPM

Media Types

- Air, Water, Light Oil

CODING EXAMPLE

CB - 5A3B - L243 - CUS - XS

C » SERIES

B » BODY COLOUR
B = Black
W = White

5 » COIL VOLTAGE
 0 = 6 to 12V
 1 = 12V
 2 = 24V
 3 = 48V
 4 = 100 to 120V (50/60Hz)
 5 = 220 to 240V (50/60Hz)

A » ALTERNATING OR DIRECT CURRENT
A = AC
D = DC
P = Pulse

3 » COIL ORIENTATION (Reference point of 0 degrees is inline with the inlet. Orientation sequence is clockwise)
 0 = 0 Degrees
 1 = 90 Degrees
 2 = 180 Degrees
 3 = 270 Degrees

B » COIL COLOUR
B = Black
W = White

L » ELECTRICAL CONNECTION TYPE
T = 6.3mm QC tab (not leaded)
D = DIN connector
L = Wire Leads

2 » WIRE LEAD LENGTH (Applies to Electrical Connection Type L only)
 0 = Not Applicable
 1 = 100mm
 2 = 180mm
 3 = 300mm
 4 = 350mm
 5 = 800mm
 6 = 1850mm
 7 = 500mm

4 » WIRE LEAD COLOUR (Applies to Electrical Connection Type L only)
 0 = Not Applicable
 1 = Black
 2 = Blue
 3 = Brown
 4 = Red
 5 = Yellow
 6 = White
 8 = Black/Red
 9 = 2 Core Black Sheath (Black/Red)

3 » WIRE LEAD TREATMENT (Applies to Electrical Connection Type L only)
 0 = Not Applicable
 1 = Cut not stripped
 2 = Stripped 6mm
 3 = Stripped 10mm
 9 = 4.8mm QC Receptical (Insulated)

C » VALVE OPERATING TYPE
O = Normally Open
C = Normally Closed
L = Latching
P = Proportional

U » REGULATOR
A = 3 litres/minute
B = 4 litres/minute
C = 8 litres/minute
D = 12 litres/minute
E = 16 litres/minute
U = Unregulated

S » ELASTOMER PROPERTIES
S = Standard (for use with water & air only)
V = Chemical Resistant (internal Viton components)

X » INSERT MARKINGS
N = Nymet Standard Insert
X = Customer Specified Insert

S » PACKAGING
S = Standard Export Packaging
X = Customer Specified Packaging

Solenoid Valves SERIES D

3/4" BSP Inlet (Male) - 10.5mm Barb Outlet



Pressure Range

- 20kPa (3psi) - 1250kPa (180psi)

Temperature Range

- 2°C - 60°C (ambient)
- 2°C - 80°C (media)

Nominal Flow Rate

- 20LPM

Media Types

- Air, Water, Light Oil

CODING EXAMPLE

DB - 2A3B - T000 - OAV - NS

D » SERIES

B » BODY COLOUR
B = Black
W = White

2 » COIL VOLTAGE
 0 = 6 to 12V
 1 = 12V
 2 = 24V
 3 = 48V
 4 = 100 to 120V (50/60Hz)
 5 = 220 to 240V (50/60Hz)

A » ALTERNATING OR DIRECT CURRENT
A = AC
D = DC
P = Pulse

3 » COIL ORIENTATION (Reference point of 0 degrees is inline with the inlet. Orientation sequence is clockwise)
 0 = 0 Degrees
 1 = 90 Degrees
 2 = 180 Degrees
 3 = 270 Degrees

B » COIL COLOUR
B = Black
W = White

T » ELECTRICAL CONNECTION TYPE
T = 6.3mm QC tab (not leaded)
D = DIN connector
L = Wire Leads

0 » WIRE LEAD LENGTH (Applies to Electrical Connection Type L only)
0 = Not Applicable
 1 = 100mm
 2 = 180mm
 3 = 300mm
 4 = 350mm
 5 = 800mm
 6 = 1850mm
 7 = 500mm

0 » WIRE LEAD COLOUR (Applies to Electrical Connection Type L only)
0 = Not Applicable
 1 = Black
 2 = Blue
 3 = Brown
 4 = Red
 5 = Yellow
 6 = White
 8 = Black/Red
 9 = 2 Core Black Sheath (Black/Red)

0 » WIRE LEAD TREATMENT (Applies to Electrical Connection Type L only)
0 = Not Applicable
 1 = Cut not stripped
 2 = Stripped 6mm
 3 = Stripped 10mm
 9 = 4.8mm QC Receptical (Insulated)

O » VALVE OPERATING TYPE
O = Normally Open
C = Normally Closed
L = Latching
P = Proportional

A » REGULATOR
A = 3 litres/minute
B = 4 litres/minute
C = 8 litres/minute
D = 12 litres/minute
E = 16 litres/minute
U = Unregulated

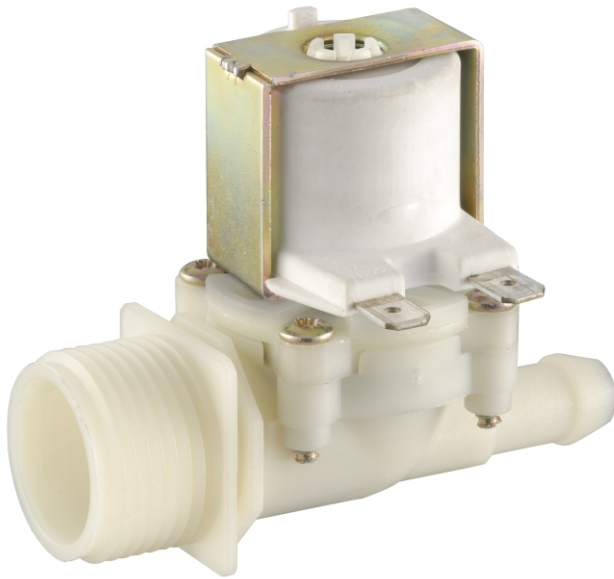
V » ELASTOMER PROPERTIES
S = Standard (for use with water & air only)
V = Chemical Resistant (Internal Viton components)

N » INSERT MARKINGS
N = Nymet Standard Insert
X = Customer Specified Insert

S » PACKAGING
S = Standard Export Packaging
X = Customer Specified Packaging

Solenoid Valves SERIES E

3/4" BSP Inlet (Male) - 10.5mm Barb Outlet Inline



Pressure Range

- 20kPa (3psi) - 1250kPa (180psi)

Temperature Range

- 2°C - 60°C (ambient)
- 2°C - 80°C (media)

Nominal Flow Rate

- 20LPM

Media Types

- Air, Water, Light Oil

CODING EXAMPLE

EW - 5A3W - T000 - CBV - XS

E » SERIES

W » BODY COLOUR
B = Black
W = White

5 » COIL VOLTAGE
0 = 6 to 12V
1 = 12V
2 = 24V
3 = 48V
4 = 100 to 120V (50/60Hz)
5 = 220 to 240V (50/60Hz)

A » ALTERNATING OR DIRECT CURRENT
A = AC
D = DC

3 » COIL ORIENTATION (Reference point of 0 degrees is inline with the Inlet. Orientation sequence is clockwise)
0 = 0 Degrees
1 = 90 Degrees
2 = 180 Degrees
3 = 270 Degrees

W » COIL COLOUR
B = Black
W = White

T » ELECTRICAL CONNECTION TYPE
T = 6.3mm QC tab (not leaded)

0 » WIRE LEAD LENGTH (Applies to Electrical Connection Type L only)
0 = Not Applicable

0 » WIRE LEAD COLOUR (Applies to Electrical Connection Type L only)
0 = Not Applicable

0 » WIRE LEAD TREATMENT (Applies to Electrical Connection Type L only)
0 = Not Applicable

C » VALVE OPERATING TYPE
C = Normally Closed

B » REGULATOR
A = 3 litres/minute
B = 4 litres/minute
C = 8 litres/minute
D = 12 litres/minute
E = 16 litres/minute
U = Unregulated

V » ELASTOMER PROPERTIES
S = Standard (for use with water & air only)
V = Chemical Resistant (internal Viton components)

X » INSERT MARKINGS
N = Nymet Standard Insert
X = Customer Specified Insert

S » PACKAGING
S = Standard Export Packaging
X = Customer Specified Packaging

Solenoid Valves SERIES F

3/4" BSP Inlet (Male) - 10.5mm Barb Outlet Right Angle



Pressure Range

- 20kPa (3psi) - 1250kPa (180psi)

Temperature Range

- 2°C - 60°C (ambient)
- 2°C - 80°C (media)

Nominal Flow Rate

- 20LPM

Media Types

- Air, Water, Light Oil

CODING EXAMPLE

FW - 5A3W - T000 - CEV - XS

F » SERIES

W » BODY COLOUR
B = Black
W = White

5 » COIL VOLTAGE
0 = 6 to 12V
1 = 12V
2 = 24V
3 = 48V
4 = 100 to 120V (50/60Hz)
5 = 220 to 240V (50/60Hz)

A » ALTERNATING OR DIRECT CURRENT
A = AC
D = DC

3 » COIL ORIENTATION (Reference point of 0 degrees is inline with the inlet. Orientation sequence is clockwise)
0 = 0 Degrees
1 = 90 Degrees
2 = 180 Degrees
3 = 270 Degrees

W » COIL COLOUR
B = Black
W = White

T » ELECTRICAL CONNECTION TYPE
T = 6.3mm Q/C tab (not leaded)

0 » WIRE LEAD LENGTH (Applies to Electrical Connection Type L only)
0 = Not Applicable

0 » WIRE LEAD COLOUR (Applies to Electrical Connection Type L only)
0 = Not Applicable

0 » WIRE LEAD TREATMENT (Applies to Electrical Connection Type L only)
0 = Not Applicable

C » VALVE OPERATING TYPE
C = Normally Closed

E » REGULATOR
A = 3 litres/minute
B = 4 litres/minute
C = 8 litres/minute
D = 12 litres/minute
E = 16 litres/minute
U = Unregulated

V » ELASTOMER PROPERTIES
S = Standard (for use with water & air only)
V = Chemical Resistant (internal Viton components)

X » INSERT MARKINGS
N = Nymet Standard Insert
X = Customer Specified Insert

S » PACKAGING
S = Standard Export Packaging
X = Customer Specified Packaging

Solenoid Valves SERIES G

3/4" BSP Inlet (Male) - 1/2" Barb Outlet Right Angle



Pressure Range

- 20kPa (3psi) - 1250kPa (180psi)

Temperature Range

- 2°C - 60°C (ambient)
- 2°C - 80°C (media)

Nominal Flow Rate

- 20LPM

Media Types

- Air, Water, Light Oil

CODING EXAMPLE

GW - 5A3W - T000 - CCV - XX

G » SERIES

W » BODY COLOUR
B = Black
W = White

5 » COIL VOLTAGE
0 = 6 to 12V
1 = 12V
2 = 24V
3 = 48V
4 = 100 to 120V (50/60Hz)
5 = 220 to 240V (50/60Hz)

A » ALTERNATING OR DIRECT CURRENT
A = AC
D = DC

3 » COIL ORIENTATION (Reference point of 0 degrees is inline with the inlet. Orientation sequence is clockwise)
0 = 0 Degrees
1 = 90 Degrees
2 = 180 Degrees
3 = 270 Degrees

W » COIL COLOUR
B = Black
W = White

T » ELECTRICAL CONNECTION TYPE
T = 6.3mm Q/C tab (not leaded)

0 » WIRE LEAD LENGTH (Applies to Electrical Connection Type L only)
0 = Not Applicable

0 » WIRE LEAD COLOUR (Applies to Electrical Connection Type L only)
0 = Not Applicable

0 » WIRE LEAD TREATMENT (Applies to Electrical Connection Type L only)
0 = Not Applicable

C » VALVE OPERATING TYPE
C = Normally Closed

C » REGULATOR
A = 3 litres/minute
B = 4 litres/minute
C = 8 litres/minute
D = 12 litres/minute
E = 16 litres/minute
U = Unregulated

V » ELASTOMER PROPERTIES
S = Standard (for use with water & air only)
V = Chemical Resistant (internal Viton components)

X » INSERT MARKINGS
N = Nymet Standard Insert
X = Customer Specified Insert

X » PACKAGING
S = Standard Export Packaging
X = Customer Specified Packaging

Solenoid Valves SERIES H

1/2" BSP Inlet (Male) - 1/2" BSP Outlet (Female)



Pressure Range

- 20kPa (3psi) - 1250kPa (180psi)

Temperature Range

- 2°C - 60°C (ambient)
- 2°C - 80°C (media)

Nominal Flow Rate

- 20LPM

Media Types

- Air, Water, Light Oil

CODING EXAMPLE

HB - OP3B - D000 - LCS - XX

H » SERIES

B » BODY COLOUR
B = Black
W = White
D = Black Drill/Tap 1/4" BSP

0 » COIL VOLTAGE
0 = 6 to 12V
1 = 12V
2 = 24V
3 = 48V
4 = 100 to 120V (50/60Hz)
5 = 220 to 240V (50/60Hz)

P » ALTERNATING OR DIRECT CURRENT
A = AC
D = DC
P = Pulse

3 » COIL ORIENTATION (Reference point of 0 degrees is inline with the inlet. Orientation sequence is clockwise)
0 = 0 Degrees
1 = 90 Degrees
2 = 180 Degrees
3 = 270 Degrees

B » COIL COLOUR
B = Black
W = White

D » ELECTRICAL CONNECTION TYPE
T = 6.3mm QC tab (not leaded)
D = DIN connector
L = Wire Leads

0 » WIRE LEAD LENGTH (Applies to Electrical Connection Type L only)
0 = Not Applicable
1 = 100mm
2 = 180mm
3 = 300mm
4 = 350mm
5 = 800mm
6 = 1850mm
7 = 500mm

0 » WIRE LEAD COLOUR (Applies to Electrical Connection Type L only)
0 = Not Applicable
1 = Black
2 = Blue
3 = Brown
4 = Red
5 = Yellow
6 = White
8 = Black/Red
9 = 2 Core Black Sheath (Black/Red)

0 » WIRE LEAD TREATMENT (Applies to Electrical Connection Type L only)
0 = Not Applicable
1 = Cut not stripped
2 = Stripped 6mm
3 = Stripped 10mm
9 = 4.8mm QC Receptical (Insulated)

L » VALVE OPERATING TYPE
O = Normally Open
C = Normally Closed
L = Latching
P = Proportional

C » REGULATOR
A = 3 litres/minute
B = 4 litres/minute
C = 8 litres/minute
D = 12 litres/minute
E = 16 litres/minute
U = Unregulated

S » ELASTOMER PROPERTIES
S = Standard (for use with water & air only)
V = Chemical Resistant (Internal Viton components)

X » INSERT MARKINGS
N = Nymet Standard Insert
X = Customer Specified Insert

X » PACKAGING
S = Standard Export Packaging
X = Customer Specified Packaging

Solenoid Valves SERIES J

3/4" BSP Inlet (Male) - 16mm Barb Outlet



Pressure Range

- 20kPa (3psi) - 1250kPa (180psi)

Temperature Range

- 2°C - 60°C (ambient)
- 2°C - 80°C (media)

Nominal Flow Rate

- 20LPM

Media Types

- Air, Water, Light Oil

CODING EXAMPLE

JB - 1D3B - L791 - CAS - NS

J » SERIES

B » BODY COLOUR
B = Black
W = White

1 » COIL VOLTAGE
 0 = 6 to 12V
1 = 12V
 2 = 24V
 3 = 48V
 4 = 100 to 120V (50/60Hz)
 5 = 220 to 240V (50/60Hz)

D » ALTERNATING OR DIRECT CURRENT
A = AC
D = DC

3 » COIL ORIENTATION (Reference point of 0 degrees is inline with the inlet. Orientation sequence is clockwise)
 0 = 0 Degrees
1 = 90 Degrees
 2 = 180 Degrees
3 = 270 Degrees

B » COIL COLOUR
B = Black
W = White

L » ELECTRICAL CONNECTION TYPE
D = DIN Connector
L = Wire Leads

7 » WIRE LEAD LENGTH (Applies to Electrical Connection Type L only)
 0 = Not Applicable
1 = 100mm
 2 = 180mm
 3 = 300mm
 4 = 350mm
 5 = 800mm
 6 = 1850mm
7 = 500mm

9 » WIRE LEAD COLOUR (Applies to Electrical Connection Type L only)
 0 = Not Applicable
1 = Black
 2 = Blue
 3 = Brown
 4 = Red
 5 = Yellow
 6 = White
 8 = Black/Red
9 = 2 Core Black Sheath (Black/Red)

1 » WIRE LEAD TREATMENT (Applies to Electrical Connection Type L only)
 0 = Not Applicable
1 = Cut not stripped
 2 = Stripped 6mm
 3 = Stripped 10mm
 9 = 4.8mm QC Receptical (Insulated)

C » VALVE OPERATING TYPE
O = Normally Open
C = Normally Closed

A » REGULATOR
A = 3 litres/minute
B = 4 litres/minute
C = 8 litres/minute
D = 12 litres/minute
E = 16 litres/minute
U = Unregulated

S » ELASTOMER PROPERTIES
S = Standard (for use with water & air only)
V = Chemical Resistant (Internal Viton components)

N » INSERT MARKINGS
N = Nymet Standard Insert
X = Customer Specified Insert

S » PACKAGING
S = Standard Export Packaging
X = Customer Specified Packaging

Solenoid Valves SERIES K

2 x 5/8" Barb Inlet - 1 x 3/4" Barb Outlet



Pressure Range

- 20kPa (3psi) - 1250kPa (180psi)

Temperature Range

- 2°C - 60°C (ambient)
- 2°C - 80°C (media)

Nominal Flow Rate

- 20LPM

Media Types

- Air, Water, Light Oil

CODING EXAMPLE

KB - 5A2W - T000 - CUS - NX

K » SERIES

B » BODY COLOUR
B = Black
W = White

5 » COIL VOLTAGE
 0 = 6 to 12V
 1 = 12V
 2 = 24V
 3 = 48V
 4 = 100 to 120V (50/60Hz)
 5 = 220 to 240V (50/60Hz)

A » ALTERNATING OR DIRECT CURRENT
A = AC
D = DC
P = Pulse

2 » COIL ORIENTATION (Reference point of 0 degrees is inline with the inlet. Orientation sequence is clockwise)
 0 = 0 Degrees
 1 = 90 Degrees
 2 = 180 Degrees
 3 = 270 Degrees

W » COIL COLOUR
B = Black
W = White

T » ELECTRICAL CONNECTION TYPE
T = 6.3mm QC tab (not leaded)
D = DIN connector
L = Wire Leads

0 » WIRE LEAD LENGTH (Applies to Electrical Connection Type L only)
0 = Not Applicable
 1 = 100mm
 2 = 180mm
 3 = 300mm
 4 = 350mm
 5 = 800mm
 6 = 1850mm
 7 = 500mm

0 » WIRE LEAD COLOUR (Applies to Electrical Connection Type L only)
0 = Not Applicable
 1 = Black
 2 = Blue
 3 = Brown
 4 = Red
 5 = Yellow
 6 = White
 8 = Black/Red
 9 = 2 Core Black Sheath (Black/Red)

0 » WIRE LEAD TREATMENT (Applies to Electrical Connection Type L only)
0 = Not Applicable
 1 = Cut not stripped
 2 = Stripped 6mm
 3 = Stripped 10mm
 9 = 4.8mm QC Receptical (Insulated)

C » VALVE OPERATING TYPE
O = Normally Open
C = Normally Closed
L = Latching
P = Proportional

U » REGULATOR
U = Unregulated

S » ELASTOMER PROPERTIES
S = Standard (for use with water & air only)
V = Chemical Resistant (internal Viton components)

N » INSERT MARKINGS
N = Nymet Standard Insert
X = Customer Specified Insert

X » PACKAGING
S = Standard Export Packaging
X = Customer Specified Packaging

Solenoid Valves SERIES L

3/8" BSP Inlet (Female) - 3/8" BSP Outlet (Female)



Pressure Range

- 20kPa (3psi) - 1250kPa (180psi)

Temperature Range

- -40°C - 135°C (ambient)
- 2°C - 80°C (media)

Max Flow Rate

- 120,000 BTU/Hr

Media Types

- Natural Gas, Mixed LP & LP/Air Mixtures

CODING EXAMPLE

LA - 1D1B - T000 - PUS - NS

L » SERIES

A » BODY COLOUR
A = Anodised Black

1 » COIL VOLTAGE
0 = 6 to 12V
1 = 12V
2 = 24V
3 = 48V
4 = 100 to 120V (50/60Hz)
5 = 220 to 240V (50/60Hz)

D » ALTERNATING OR DIRECT CURRENT
A = AC
D = DC
P = Pulse

1 » COIL ORIENTATION (Reference point of 0 degrees is inline with the inlet. Orientation sequence is clockwise)
0 = 0 Degrees
1 = 90 Degrees
2 = 180 Degrees
3 = 270 Degrees

B » COIL COLOUR
B = Black

T » ELECTRICAL CONNECTION TYPE
T = 6.3mm QC tab (not leaded)
D = DIN connector
L = Wire Leads

0 » WIRE LEAD LENGTH (Applies to Electrical Connection Type L only)
0 = Not Applicable
1 = 100mm
2 = 180mm
3 = 300mm
4 = 350mm
5 = 800mm
6 = 1850mm
7 = 500mm

0 » WIRE LEAD COLOUR (Applies to Electrical Connection Type L only)
0 = Not Applicable
1 = Black
2 = Blue
3 = Brown
4 = Red
5 = Yellow
6 = White
8 = Black/Red
9 = 2 Core Black Sheath (Black/Red)

0 » WIRE LEAD TREATMENT (Applies to Electrical Connection Type L only)
0 = Not Applicable
1 = Cut not stripped
2 = Stripped 6mm
3 = Stripped 10mm
9 = 4.8mm QC Receptical (Insulated)

P » VALVE OPERATING TYPE
O = Normally Open
C = Normally Closed
L = Latching
P = Proportional

U » REGULATOR
U = Unregulated

S » ELASTOMER PROPERTIES
S = Standard (for use with natural gas, mixed LP and LP/air mixtures)
V = Chemical Resistant (internal Viton components)

N » INSERT MARKINGS
N = Nymet Standard Insert
X = Customer Specified Insert

S » PACKAGING
S = Standard Export Packaging
X = Customer Specified Packaging

Solenoid Valves SERIES M

3/8" BSP Inlet (Male) - 5/8" Barb Outlet



Pressure Range

- 20kPa (3psi) - 1250kPa (180psi)

Temperature Range

- 2°C - 60°C (ambient)
- 2°C - 80°C (media)

Nominal Flow Rate

- 20LPM

Media Types

- Air, Water, Light Oil

CODING EXAMPLE

MB - 5A2W - T000 - OUV - NS

M » SERIES

B » BODY COLOUR
B = Black
W = White

5 » COIL VOLTAGE
 0 = 6 to 12V
 1 = 12V
 2 = 24V
 3 = 48V
 4 = 100 to 120V (50/60Hz)
 5 = 220 to 240V (50/60Hz)

A » ALTERNATING OR DIRECT CURRENT
A = AC
D = DC
P = Pulse

2 » COIL ORIENTATION (Reference point of 0 degrees is inline with the inlet. Orientation sequence is clockwise)
 0 = 0 Degrees
 1 = 90 Degrees
 2 = 180 Degrees
 3 = 270 Degrees

W » COIL COLOUR
B = Black
W = White

T » ELECTRICAL CONNECTION TYPE
T = 6.3mm QC tab (not leaded)
D = DIN connector
L = Wire Leads

0 » WIRE LEAD LENGTH (Applies to Electrical Connection Type L only)
 0 = Not Applicable
 1 = 100mm
 2 = 180mm
 3 = 300mm
 4 = 350mm
 5 = 800mm
 6 = 1850mm
 7 = 500mm

0 » WIRE LEAD COLOUR (Applies to Electrical Connection Type L only)
 0 = Not Applicable
 1 = Black
 2 = Blue
 3 = Brown
 4 = Red
 5 = Yellow
 6 = White
 8 = Black/Red
 9 = 2 Core Black Sheath (Black/Red)

0 » WIRE LEAD TREATMENT (Applies to Electrical Connection Type L only)
 0 = Not Applicable
 1 = Cut not stripped
 2 = Stripped 6mm
 3 = Stripped 10mm
 9 = 4.8mm QC Receptical (Insulated)

O » VALVE OPERATING TYPE
O = Normally Open
C = Normally Closed
L = Latching
P = Proportional

U » REGULATOR
U = Unregulated

V » ELASTOMER PROPERTIES
S = Standard (for use with water & air only)
V = Chemical Resistant (internal Viton components)

N » INSERT MARKINGS
N = Nymet Standard Insert
X = Customer Specified Insert

S » PACKAGING
S = Standard Export Packaging
X = Customer Specified Packaging

Solenoid Valves SERIES N

1" BSP Inlet (Female) - 1" BSP Outlet (Female)



Pressure Range

- 50kPa (7psi) - 1250kPa (180psi)

Temperature Range

- 2°C - 60°C (ambient)
- 2°C - 60°C (media)

Nominal Flow Rate

- 100LPM

Media Types

- Air, Water, Light Oil

CODING EXAMPLE

NB - 2A0B - L313 - O0S - NX

N » SERIES

B » BODY COLOUR
B = Black

2 » COIL VOLTAGE
0 = 6 to 12V
1 = 12V
2 = 24V
3 = 48V
4 = 100 to 120V (50/60Hz)
5 = 220 to 240V (50/60Hz)

A » ALTERNATING OR DIRECT CURRENT
A = AC
D = DC
P = Pulse

0 » COIL ORIENTATION (Reference point of 0 degrees is inline with the inlet. Orientation sequence is clockwise)
0 = 0 Degrees

B » COIL COLOUR
B = Black

L » ELECTRICAL CONNECTION TYPE
L = Wire Leads

3 » WIRE LEAD LENGTH (Applies to Electrical Connection Type L only)
3 = 300mm

1 » WIRE LEAD COLOUR (Applies to Electrical Connection Type L only)
1 = Black

3 » WIRE LEAD TREATMENT (Applies to Electrical Connection Type L only)
3 = Stripped 10mm

O » VALVE OPERATING TYPE
O = Normally Closed
L = Latching

0 » REGULATOR
0 = Not Applicable

S » ELASTOMER PROPERTIES
S = Standard (for use with water & air only) V = Chemical Resistant (internal Viton components)

N » INSERT MARKINGS
N = Nymet Standard Insert X = Customer Specified Insert

X » PACKAGING
S = Standard Export Packaging X = Customer Specified Packaging

Solenoid Valves SERIES P

1/2" BSP Inlet (Male) - 2 x 1/2" BSP Outlet (Male)



Pressure Range

- 20kPa (3psi) - 1250kPa (180psi)

Temperature Range

- 2°C - 60°C (ambient)
- 2°C - 80°C (media)

Nominal Flow Rate

- 20LPM

Media Types

- Air, Water, Light Oil

CODING EXAMPLE

PB - 2A1B - L262 - CUV - NX

P » SERIES

B » BODY COLOUR
B = Black
W = White

2 » COIL VOLTAGE
 0 = 6 to 12V 3 = 48V
 1 = 12V 4 = 100 to 120V (50/60Hz)
 2 = 24V 5 = 220 to 240V (50/60Hz)

A » ALTERNATING OR DIRECT CURRENT
A = AC
D = DC
P = Pulse

1 » COIL ORIENTATION (Reference point of 0 degrees is inline with the inlet. Orientation sequence is clockwise)
 0 = 0 Degrees 2 = 180 Degrees
 1 = 90 Degrees 3 = 270 Degrees

B » COIL COLOUR
B = Black
W = White

L » ELECTRICAL CONNECTION TYPE
T = 6.3mm QC tab (not leaded)
D = DIN connector
L = Wire Leads

2 » WIRE LEAD LENGTH (Applies to Electrical Connection Type L only)
 0 = Not Applicable 3 = 300mm 6 = 1850mm
 1 = 100mm 4 = 350mm 7 = 500mm
 2 = 180mm 5 = 800mm

6 » WIRE LEAD COLOUR (Applies to Electrical Connection Type L only)
 0 = Not Applicable 3 = Brown 6 = White
 1 = Black 4 = Red 8 = Black/Red
 2 = Blue 5 = Yellow 9 = 2 Core Black Sheath (Black/Red)

2 » WIRE LEAD TREATMENT (Applies to Electrical Connection Type L only)
 0 = Not Applicable 3 = Stripped 10mm
 1 = Cut not stripped 9 = 4.8mm QC Receptical (Insulated)
 2 = Stripped 6mm

C » VALVE OPERATING TYPE
O = Normally Open L = Latching
C = Normally Closed

U » REGULATOR
U = Unregulated

V » ELASTOMER PROPERTIES
S = Standard (for use with water & air only) **V** = Chemical Resistant (Internal Viton components)

N » INSERT MARKINGS
N = Nymet Standard Insert X = Customer Specified Insert

X » PACKAGING
S = Standard Export Packaging X = Customer Specified Packaging

Solenoid Valves SERIES Q (Direct Acting)

1/2" BSP Inlet (Male) - 1/2" BSP Outlet (Female)



Pressure Range

- 6kPa (1psi) - 200kPa (29psi)

Temperature Range

- 2°C - 60°C (ambient)
- 2°C - 80°C (media)

Nominal Flow Rate

- 5LPM

Media Types

- Air, Water, Light Oil

CODING EXAMPLE

QB - 1D1W - L231 - CUV - NS

Q » SERIES

- B » BODY COLOUR**
B = Black
W = White
D = Black Drill/Tap 1/4" BSP

- 1 » COIL VOLTAGE**
 0 = 6 to 12V
 1 = 12V
 2 = 24V
 3 = 48V
 4 = 100 to 120V (50/60Hz)
 5 = 220 to 240V (50/60Hz)

- D » ALTERNATING OR DIRECT CURRENT**
A = AC
D = DC

- 1 » COIL ORIENTATION** (Reference point of 0 degrees is inline with the inlet. Orientation sequence is clockwise)
 0 = 0 Degrees
 1 = 90 Degrees
 2 = 180 Degrees
 3 = 270 Degrees

- W » COIL COLOUR**
B = Black
W = White

- L » ELECTRICAL CONNECTION TYPE**
T = 6.3mm QC tab (not leaded)
D = DIN connector
L = Wire Leads

- 2 » WIRE LEAD LENGTH** (Applies to Electrical Connection Type L only)
 0 = Not Applicable
 1 = 100mm
 2 = 180mm
 3 = 300mm
 4 = 350mm
 5 = 800mm
 6 = 1850mm
 7 = 500mm

- 3 » WIRE LEAD COLOUR** (Applies to Electrical Connection Type L only)
 0 = Not Applicable
 1 = Black
 2 = Blue
 3 = Brown
 4 = Red
 5 = Yellow
 6 = White
 8 = Black/Red
 9 = 2 Core Black Sheath (Black/Red)

- 1 » WIRE LEAD TREATMENT** (Applies to Electrical Connection Type L only)
 0 = Not Applicable
 1 = Cut not stripped
 2 = Stripped 6mm
 3 = Stripped 10mm
 9 = 4.8mm QC Receptical (Insulated)

- C » VALVE OPERATING TYPE**
C = Normally Closed

- U » REGULATOR**
U = Unregulated

- V » ELASTOMER PROPERTIES**
S = Standard (for use with water & air only)
V = Chemical Resistant (internal Viton components)

- N » INSERT MARKINGS**
N = Nymet Standard Insert
X = Customer Specified Insert

- S » PACKAGING**
S = Standard Export Packaging
X = Customer Specified Packaging

Solenoid Valves SERIES R

3/4" BSP Inlet (Male) - 3/4" BSP Outlet (Male) High Flow



Pressure Range

- 30kPa (4psi) - 1250kPa (180psi)

Temperature Range

- 2°C - 60°C (ambient)
- 2°C - 80°C (media)

Nominal Flow Rate

- 50LPM

Media Types

- Air, Water, Light Oil

CODING EXAMPLE

RB - 1D3B - L283 - OUS - XS

R » SERIES

B » BODY COLOUR
B = Black
W = White

1 » COIL VOLTAGE
0 = 6 to 12V
1 = 12V
2 = 24V
3 = 48V
4 = 100 to 120V (50/60Hz)
5 = 220 to 240V (50/60Hz)

D » ALTERNATING OR DIRECT CURRENT
A = AC
D = DC

3 » COIL ORIENTATION (Reference point of 0 degrees is inline with the inlet. Orientation sequence is clockwise)
0 = 0 Degrees
1 = 90 Degrees
2 = 180 Degrees
3 = 270 Degrees

B » COIL COLOUR
B = Black
W = White

L » ELECTRICAL CONNECTION TYPE
L = Wire Leads

2 » WIRE LEAD LENGTH (Applies to Electrical Connection Type L only)
0 = Not Applicable
1 = 100mm
2 = 180mm
3 = 300mm
4 = 350mm
5 = 800mm
6 = 1850mm
7 = 500mm

8 » WIRE LEAD COLOUR (Applies to Electrical Connection Type L only)
0 = Not Applicable
1 = Black
2 = Blue
3 = Brown
4 = Red
5 = Yellow
6 = White
8 = Black/Red
9 = 2 Core Black Sheath (Black/Red)

3 » WIRE LEAD TREATMENT (Applies to Electrical Connection Type L only)
0 = Not Applicable
1 = Cut not stripped
2 = Stripped 6mm
3 = Stripped 10mm
9 = 4.8mm QC Receptical (Insulated)

O » VALVE OPERATING TYPE
O = Normally Open
C = Normally Closed

U » REGULATOR
A = 3 litres/minute
B = 4 litres/minute
C = 8 litres/minute
D = 12 litres/minute
E = 16 litres/minute
U = Unregulated

S » ELASTOMER PROPERTIES
S = Standard (for use with water & air only)
V = Chemical Resistant (internal Viton components)

X » INSERT MARKINGS
N = Nymet Standard Insert
X = Customer Specified Insert

S » PACKAGING
S = Standard Export Packaging
X = Customer Specified Packaging

Solenoid Valves SERIES S

3/4" BSP Inlet (Male) - 3/4" Barb Outlet High Flow



Pressure Range

- 30kPa (4psi) - 1250kPa (180psi)

Temperature Range

- 2°C - 60°C (ambient)
- 2°C - 80°C (media)

Nominal Flow Rate

- 50LPM

Media Types

- Air, Water, Light Oil

CODING EXAMPLE

SB - 2A3B - L251 - CUS - NX

S » SERIES

B » BODY COLOUR
B = Black
W = White

2 » COIL VOLTAGE
 0 = 6 to 12V
 1 = 12V
 2 = 24V
 3 = 48V
 4 = 100 to 120V (50/60Hz)
 5 = 220 to 240V (50/60Hz)

A » ALTERNATING OR DIRECT CURRENT
A = AC
D = DC

3 » COIL ORIENTATION (Reference point of 0 degrees is inline with the Inlet. Orientation sequence is clockwise)
 0 = 0 Degrees
 1 = 90 Degrees
 2 = 180 Degrees
 3 = 270 Degrees

B » COIL COLOUR
B = Black
W = White

L » ELECTRICAL CONNECTION TYPE
L = Wire Leads

2 » WIRE LEAD LENGTH (Applies to Electrical Connection Type L only)
 0 = Not Applicable
 1 = 100mm
 2 = 180mm
 3 = 300mm
 4 = 350mm
 5 = 800mm
 6 = 1850mm
 7 = 500mm

5 » WIRE LEAD COLOUR (Applies to Electrical Connection Type L only)
 0 = Not Applicable
 1 = Black
 2 = Blue
 3 = Brown
 4 = Red
 5 = Yellow
 6 = White
 8 = Black/Red
 9 = 2 Core Black Sheath (Black/Red)

1 » WIRE LEAD TREATMENT (Applies to Electrical Connection Type L only)
 0 = Not Applicable
 1 = Cut not stripped
 2 = Stripped 6mm
 3 = Stripped 10mm
 9 = 4.8mm QC Receptical (Insulated)

C » VALVE OPERATING TYPE
O = Normally Open
C = Normally Closed

U » REGULATOR
A = 3 litres/minute
B = 4 litres/minute
C = 8 litres/minute
D = 12 litres/minute
E = 16 litres/minute
U = Unregulated

S » ELASTOMER PROPERTIES
S = Standard (for use with water & air only)
V = Chemical Resistant (internal Viton components)

N » INSERT MARKINGS
N = Nymet Standard Insert
X = Customer Specified Insert

X » PACKAGING
S = Standard Export Packaging
X = Customer Specified Packaging

Solenoid Valves SERIES T

1/2" BSP Inlet (Female) - 1/2" BSP Outlet (Male)



Pressure Range

- 20kPa (3psi) - 1250kPa (180psi)

Temperature Range

- 2°C - 60°C (ambient)
- 2°C - 80°C (media)

Nominal Flow Rate

- 20LPM

Media Types

- Air, Water, Light Oil

CODING EXAMPLE

TB - 1D3B - L312 - CUS - XX

T » SERIES

B » BODY COLOUR
B = Black
W = White

1 » COIL VOLTAGE
0 = 6 to 12V 3 = 48V
1 = 12V 4 = 100 to 120V (50/60Hz)
2 = 24V 5 = 220 to 240V (50/60Hz)

D » ALTERNATING OR DIRECT CURRENT
A = AC
D = DC
P = Pulse

3 » COIL ORIENTATION (Reference point of 0 degrees is inline with the inlet. Orientation sequence is clockwise)
0 = 0 Degrees 2 = 180 Degrees
1 = 90 Degrees 3 = 270 Degrees

B » COIL COLOUR
B = Black
W = White

L » ELECTRICAL CONNECTION TYPE
T = 6.3mm QC tab (not leaded)
D = DIN connector
L = Wire Leads

3 » WIRE LEAD LENGTH (Applies to Electrical Connection Type L only)
0 = Not Applicable 3 = 300mm 6 = 1850mm
1 = 100mm 4 = 350mm 7 = 500mm
2 = 180mm 5 = 800mm

1 » WIRE LEAD COLOUR (Applies to Electrical Connection Type L only)
0 = Not Applicable 3 = Brown 6 = White
1 = Black 4 = Red 8 = Black/Red
2 = Blue 5 = Yellow 9 = 2 Core Black Sheath (Black/Red)

2 » WIRE LEAD TREATMENT (Applies to Electrical Connection Type L only)
0 = Not Applicable 3 = Stripped 10mm
1 = Cut not stripped 9 = 4.8mm QC Receptical (Insulated)
2 = Stripped 6mm

C » VALVE OPERATING TYPE
O = Normally Open L = Latching
C = Normally Closed P = Proportional

U » REGULATOR
U = Unregulated

S » ELASTOMER PROPERTIES
S = Standard (for use with water & air only) V = Chemical Resistant (internal Viton components)

X » INSERT MARKINGS
N = Nymet Standard Insert **X** = Customer Specified Insert

X » PACKAGING
S = Standard Export Packaging **X** = Customer Specified Packaging

Solenoid Valves SERIES U

1/2" BSP Inlet (Female) - 1/2" Barb Outlet



Pressure Range

- 20kPa (3psi) - 1250kPa (180psi)

Temperature Range

- 2°C - 60°C (ambient)
- 2°C - 80°C (media)

Nominal Flow Rate

- 20LPM

Media Types

- Air, Water, Light Oil

CODING EXAMPLE

UB - 1D1B - T000 - PUS - NS

U » SERIES

B » BODY COLOUR
B = Black
W = White

1 » COIL VOLTAGE
 0 = 6 to 12V
1 = 12V
 2 = 24V
 3 = 48V
 4 = 100 to 120V (50/60Hz)
 5 = 220 to 240V (50/60Hz)

D » ALTERNATING OR DIRECT CURRENT
A = AC
D = DC
P = Pulse

1 » COIL ORIENTATION (Reference point of 0 degrees is inline with the inlet. Orientation sequence is clockwise)
 0 = 0 Degrees
1 = 90 Degrees
 2 = 180 Degrees
 3 = 270 Degrees

B » COIL COLOUR
B = Black
W = White

T » ELECTRICAL CONNECTION TYPE
T = 6.3mm QC tab (not leaded)
D = DIN connector
L = Wire Leads

0 » WIRE LEAD LENGTH (Applies to Electrical Connection Type L only)
0 = Not Applicable
1 = 100mm
 2 = 180mm
 3 = 300mm
 4 = 350mm
 5 = 800mm
 6 = 1850mm
 7 = 500mm

0 » WIRE LEAD COLOUR (Applies to Electrical Connection Type L only)
0 = Not Applicable
1 = Black
 2 = Blue
 3 = Brown
 4 = Red
 5 = Yellow
 6 = White
 8 = Black/Red
 9 = 2 Core Black Sheath (Black/Red)

0 » WIRE LEAD TREATMENT (Applies to Electrical Connection Type L only)
0 = Not Applicable
1 = Cut not stripped
 2 = Stripped 6mm
 3 = Stripped 10mm
 9 = 4.8mm QC Receptical (Insulated)

P » VALVE OPERATING TYPE
O = Normally Open
C = Normally Closed
L = Latching
P = Proportional

U » REGULATOR
U = Unregulated

S » ELASTOMER PROPERTIES
S = Standard (for use with water & air only)
V = Chemical Resistant (Internal Viton components)

N » INSERT MARKINGS
N = Nymet Standard Insert
X = Customer Specified Insert

S » PACKAGING
S = Standard Export Packaging
X = Customer Specified Packaging

Solenoid Valves SERIES V

1" BSP Inlet (Manifold) - 1" BSP Outlet (Female)



Pressure Range

- 50kPa (7psi) - 1250kPa (180psi)

Temperature Range

- 2°C - 60°C (ambient)
- 2°C - 60°C (media)

Nominal Flow Rate

- 100LPM

Media Types

- Air, Water, Light Oil

Note : 2 valves shown for illustration purposes

CODING EXAMPLE

VB - 2A0B - L313 - C0V - NS

V » SERIES

B » BODY COLOUR
B = Black

2 » COIL VOLTAGE
0 = 6 to 12V
1 = 12V
2 = 24V
3 = 48V
4 = 100 to 120V (50/60Hz)
5 = 220 to 240V (50/60Hz)

A » ALTERNATING OR DIRECT CURRENT
A = AC
D = DC
P = Pulse

0 » COIL ORIENTATION (Reference point of 0 degrees is inline with the Inlet. Orientation sequence is clockwise)
0 = 0 Degrees

B » COIL COLOUR
B = Black

L » ELECTRICAL CONNECTION TYPE
L = Wire Leads

3 » WIRE LEAD LENGTH (Applies to Electrical Connection Type L only)
3 = 300mm

1 » WIRE LEAD COLOUR (Applies to Electrical Connection Type L only)
1 = Black

3 » WIRE LEAD TREATMENT (Applies to Electrical Connection Type L only)
3 = Stripped 10mm

C » VALVE OPERATING TYPE
C = Normally Closed
L = Latching

0 » REGULATOR
0 = Not Applicable

V » ELASTOMER PROPERTIES
S = Standard (for use with water & air only) V = Chemical Resistant (Internal Viton components)

N » INSERT MARKINGS
N = Nymet Standard Insert X = Customer Specified Insert

S » PACKAGING
S = Standard Export Packaging X = Customer Specified Packaging

Solenoid Valves SERIES Y

3/4" BSP Inlet (Male) - 3/4" BSP Outlet (Male) High Flow Manifold



Pressure Range

- 30kPa (4psi) - 1250kPa (180psi)

Temperature Range

- 2°C - 60°C (ambient)
- 2°C - 60°C (media)

Nominal Flow Rate

- 50LPM

Media Types

- Air, Water, Light Oil

Note : 2 valves shown for illustration purposes

CODING EXAMPLE

YB - 2A0B - L251 - CUS - XS

Y » SERIES

B » BODY COLOUR
B = Black
W = White

2 » COIL VOLTAGE
 0 = 6 to 12V
 1 = 12V
 2 = 24V
 3 = 48V
 4 = 100 to 120V (50/60Hz)
 5 = 220 to 240V (50/60Hz)

A » ALTERNATING OR DIRECT CURRENT
A = AC
D = DC

0 » COIL ORIENTATION (Reference point of 0 degrees is inline with the inlet. Orientation sequence is clockwise)
0 = 0 Degrees

B » COIL COLOUR
B = Black
W = White

L » ELECTRICAL CONNECTION TYPE
T = 6.3mm QC tab (not leaded)
D = DIN connector
L = Wire Leads

2 » WIRE LEAD LENGTH (Applies to Electrical Connection Type L only)
 0 = Not Applicable
 1 = 100mm
 2 = 180mm
 3 = 300mm
 4 = 350mm
 5 = 800mm
 6 = 1850mm
 7 = 500mm

5 » WIRE LEAD COLOUR (Applies to Electrical Connection Type L only)
 0 = Not Applicable
 1 = Black
 2 = Blue
 3 = Brown
 4 = Red
 5 = Yellow
 6 = White
 8 = Black/Red
 9 = 2 Core Black Sheath (Black/Red)

1 » WIRE LEAD TREATMENT (Applies to Electrical Connection Type L only)
 0 = Not Applicable
 1 = Cut not stripped
 2 = Stripped 6mm
 3 = Stripped 10mm
 9 = 4.8mm QC Receptical (Insulated)

C » VALVE OPERATING TYPE
O = Normally Open
C = Normally Closed

U » REGULATOR
U = Unregulated

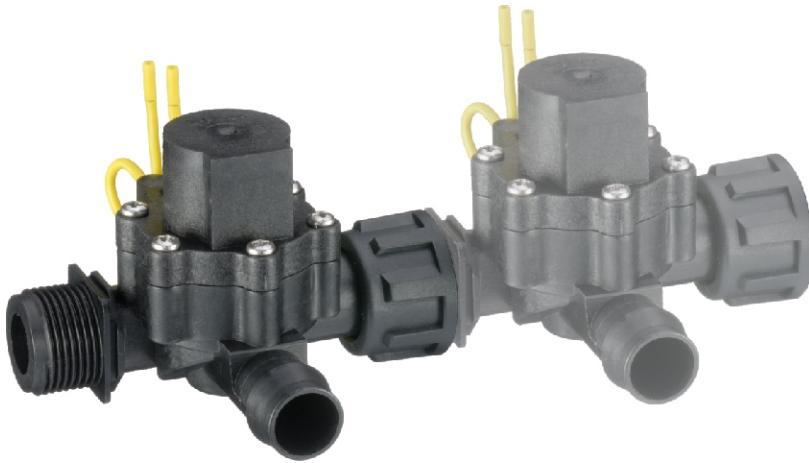
S » ELASTOMER PROPERTIES
S = Standard (for use with water & air only)
V = Chemical Resistant (Internal Viton components)

X » INSERT MARKINGS
N = Nymet Standard Insert
X = Customer Specified Insert

S » PACKAGING
S = Standard Export Packaging
X = Customer Specified Packaging

Solenoid Valves SERIES Z

3/4" BSP Inlet (Male) - 3/4" Barb Outlet High Flow Manifold



Pressure Range

- 30kPa (4psi) - 1250kPa (180psi)

Temperature Range

- 2°C - 60°C (ambient)
- 2°C - 60°C (media)

Nominal Flow Rate

- 50LPM

Media Types

- Air, Water, Light Oil

Note : 2 valves shown for illustration purposes

CODING EXAMPLE

ZB - 2A0B - L251 - C0S - XS

Z » SERIES

B » BODY COLOUR
B = Black
W = White

2 » COIL VOLTAGE
 0 = 6 to 12V
 1 = 12V
 2 = 24V
 3 = 48V
 4 = 100 to 120V (50/60Hz)
 5 = 220 to 240V (50/60Hz)

A » ALTERNATING OR DIRECT CURRENT
A = AC
D = DC

0 » COIL ORIENTATION (Reference point of 0 degrees is inline with the inlet. Orientation sequence is clockwise)
0 = 0 Degrees

B » COIL COLOUR
B = Black
W = White

L » ELECTRICAL CONNECTION TYPE
T = 6.3mm QC tab (not leaded)
D = DIN connector
L = Wire Leads

2 » WIRE LEAD LENGTH (Applies to Electrical Connection Type L only)
 0 = Not Applicable
 1 = 100mm
 2 = 180mm
 3 = 300mm
 4 = 350mm
 5 = 800mm
 6 = 1850mm
 7 = 500mm

5 » WIRE LEAD COLOUR (Applies to Electrical Connection Type L only)
 0 = Not Applicable
 1 = Black
 2 = Blue
 3 = Brown
 4 = Red
 5 = Yellow
 6 = White
 8 = Black/Red
 9 = 2 Core Black Sheath (Black/Red)

1 » WIRE LEAD TREATMENT (Applies to Electrical Connection Type L only)
 0 = Not Applicable
 1 = Cut not stripped
 2 = Stripped 6mm
 3 = Stripped 10mm
 9 = 4.8mm QC Receptical (Insulated)

C » VALVE OPERATING TYPE
O = Normally Open
C = Normally Closed

0 » REGULATOR
0 = Not Applicable

S » ELASTOMER PROPERTIES
S = Standard (for use with water & air only)
V = Chemical Resistant (Internal Viton components)

X » INSERT MARKINGS
N = Nymet Standard Insert
X = Customer Specified Insert

S » PACKAGING
S = Standard Export Packaging
X = Customer Specified Packaging

For further information contact our nearest office :

ASIA

Nymet Manufacturing Singapore Pte Ltd

Block 3015A Ubi Road 1 #01-02

Singapore 408705

Telephone +65 6748 9589

Facsimile +65 6741 5866

Email info@nymet.com.sg

Website www.nymet.com.sg

AUSTRALIA

Nymet Pty Ltd

4 Rod Court

Gulfview Heights, South Australia 5096

Telephone +61 8 8264 0928

Facsimile +61 8 8264 7345

Email nymet@bigpond.net.au

Website www.nymet.com.sg